

cubit3d

Formed in 2002 Cubit3d has created a formidable reputation for intelligent & exciting work backed by an enviable reputation for creativity, innovation & efficient delivery.

Although great design is at the core of our business we love the meaningful returns that come with it. Our passion for excellence drives us not just to meet your needs and expectations but to exceed them on every level.

If you would like more information about our design services, please contact:

Cubit3d Design

Stuart House | Eskmills | Musselburgh | EH21 7PB
| T: 0131 273 5200 | E: russell@cubit3d.com



Redcoat Café

The Redcoat café is the main restaurant within Edinburgh Castle, the no1 tourist attraction in Scotland. Commissioned by visitor attraction specialist caterers Digby Trout Restaurants the Redcoat Café involved a comprehensive refurbishment including new kitchen, servery counters and furniture layouts.



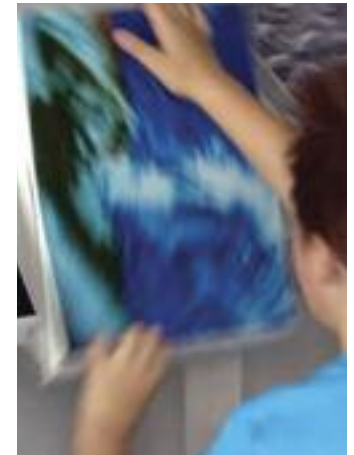
Silverscreen World Cinemas-Warsaw

Commissioned by a young American entrepreneur & backed by a group of New York investors Silverscreen aimed to be the first chain of multiplex cinemas in Eastern Europe in the post Soviet era.



Johnstons Cashmere

Despite being founded in 1797 Johnstons are cutting edge technological innovators in the world of textile design and manufacture. The brand home for Johnstons is therefore a careful combination of acknowledging the company's history whilst celebrating their design led marketing and high quality manufacturing.



The Scottish Seabird Centre

Cubit won a competitive pitch for the design of the extension to this well known East Coast landmark by developing an audacious scheme involving linking the new environment centre with the existing building with an underground tunnel. The resulting centre teaches the young and old about the dangers and threats to our environment through global warming.



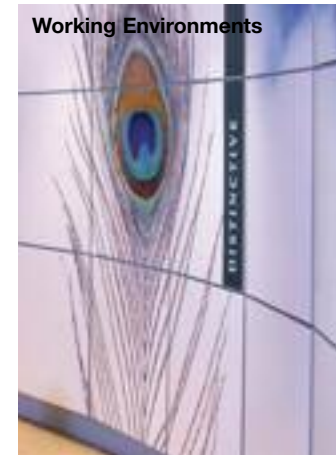
Spirit Of the Tattoo

Spirit of the Tattoo provides a year round tourist attraction examining the enduring passion of the event and explores many of the unusual and interesting stories behind it. In addition to providing the Tattoo with it's spiritual home SOTT also houses the performers temporary dressing space and therefore the entire exhibition is designed to be demountable during tattoo performances.



The British Golf Museum

A labour of love for Cubit3D's creative director, The British Golf museum project involved creating a more welcoming and open front end to this comprehensive museum and visitor attraction at the home of golf, St Andrews, the project was all about the passion that golf generates as well as unforgettable moments in golfing history.



Working Environments

Martin Currie Edinburgh

Martin Currie investment managers were rebranding and wanted to look fresher and more contemporary. Starting with reception but eventually including all of the meeting rooms and the boardroom we were able to introduce a fresh palate of colours simple sweeping forms and contemporary furniture.



Martin Currie London

Developing the corporate theme started in Edinburgh, the London office features, bold colours and simple forms derived from the companies nature themed marketing brochures. This all-new office also features frameless glass office partitioning and dramatic floor lighting effects.

cubit3d



Martin Currie Shanghai

Our most ambitious international project to date, this job comprises 5,000 sq ft of offices, meeting rooms and waiting spaces and included a complete fit out of shell space.



Navigator

Contemporary offices and reception for this Edinburgh based advertising agency.



Tayburn

A comprehensive refurbishment of a 1980's spec' built office for Edinburgh based graphic designers Tayburn.



Retail

Magenta Ink

An upmarket shop for bespoke stationary sales company Magenta Ink. The shop features a front of house sales area and a rear consultation and studio area separated by a freestanding screen. Cubit designed all of the custom built retail systems and worked closely with the client on the colour scheme and furniture selections.



Bank Of Scotland

Cubit worked closely with BOS to develop a new retail-banking format for Glasgow's Enoch Square Centre. The more customer friendly design was a key requirement from the mall before they allowed a bank a prominent retail pitch. Developed designed and implemented in just 7 weeks, the design has since been rolled out into a number of other sites.



Diageo POS

Cubit has worked for many years with graphic designers Three Brand Design on retail POS units for drinks giant Diageo. Working predominantly for the Global duty Free division these POS units are developed to tight timescales and with promotional campaigns geared towards specialist markets often in the US and the Far East.



Hudson Heaton

This upmarket contemporary jewellery shop was created for entrepreneurs Hudson & Heaton on a tiny budget of just £10,000. Making the most of the existing architecture of the shop we were able to develop a simple yet striking scheme using large-scale photographic imagery and polished walnut display cabinets.



Scotmid

This project involved rebranding the whole of the largest Co-Op in Scotland including their food, non-food and Funeral service divisions. Working closely with consultants Price Waterhouse, we created interior fit-out packages including lighting and signage, store layouts and displays for each division as well as fit out manuals and implementation guides.

If you would like more information about our design services, please contact:

Cubit3d Design

Stuart House | Eskmills | Musselburgh | EH21 7PB
| T: 0131 273 5200 | E: russell@cubit3d.com

cubit3d

If you would like more information about our design services, please contact:

Cubit3d Design

Stuart House | Eskmills | Musselburgh | EH21 7PB

| T: 0131 273 5200 | E: russell@cubit3d.com



Leisure

The Spice Cube

Developed for a young Indian Entrepreneur in Newcastle's Gate leisure development the Spice Cube was one of the first 'new wave' of contemporary Indian restaurants. Designed around soft powdery colours reminiscent of Indian spices the restaurant's bold use of colour and gallery interior stands out against mainstream chain store restaurants.



The Bridge Inn

The Bridge Inn is a unique and much loved Edinburgh institution situated on the edge of the city and close to the historic Union canal. This project called for a sensitive updating of the existing pub and restaurant, restoring and enhancing the existing character of this 200-year-old building with a contemporary spin on traditional style.



The Glasshouse @ Eskmills

Sitting within a dramatic courtyard at the heart of a carefully restored 18th century mill building, The Glasshouse is a clean modern and classic space designed as a destination restaurant. Since opening the Glasshouse has won many awards for both its cuisine and design culminating in the project being nominated as finalists in the Scottish Design awards 2007.



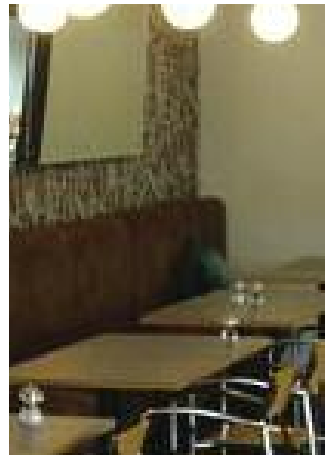
The Kitchin

Designed for chef/proprietor Tom Kitchin this restaurant quickly became the talk of the city and culminated in Tom being awarded a Michelin star less than a year after opening. Making the most of a difficult site with restricted views and limited light, Cubit3D elected to play on the contrast between the open and light bar area and the darker restaurant area.



Massa

The owners of this well-known club have been operating successfully for more than 25 years. The club was therefore in need of substantial updating but financial constraints meant that the club could only close for a short period. Working to a tight timescale the designers created a new 'amphitheatre style seating arrangement, lighting effects and bar re-skin.



The RSC Café

The Royal Shakespeare Company theatre at Stratford is one of the world's most iconic theatre sites. Designed for restaurant operators Digby Trout Restaurants, the RSC café was designed as a short-term refurbishment whilst an all-new theatre and restaurant facility is being developed.



Bar38 Newcastle & Clerkenwell

Designed to break the mould of a stagnating 'style bar' culture, these projects were the result of a competitive pitch by bar operators Scottish & Newcastle. The Bar 38 concept was based on the creation of a series of stylish lounge and dining experiences grouped around a central bar.



Centro

This bar/brasserie was designed as a multi-functional space for the University Of Edinburgh. During term time Centro serves as the main bar for the University's Pollock Halls campus. Outwith term the University has a thriving business running business seminars and lectures as well as renting space for other business users.

cubit3d



Absorb

Absorb aims to compete head on with high street branded café/bar concepts but is actually an in-house brand owned and developed for The University Of Edinburgh. Sitting within a dramatic double height space with views from an extensive terrace area into landscaped grounds, Absorb is an impressive facility.



Absorb CSE

The success of the original Absorb unit has encouraged the University to develop a series of further Absorb outlets including mobile coffee carts and this stand-alone facility within the University's recently refurbished Centre For Sport & Leisure.



Chinois

This large scale Chinese buffet restaurant makes the most of the dramatic Tepanyaki cooking style by putting these specialist counters at the forefront of the layout. Designed to evoke the busy & noisy 'Canteen style' of Asian street dining, Chinois is a contemporary restaurant with dramatic custom designed lighting & ceiling features as well as large scale iconic graphics.



Seasons

Operators Westbrook Restaurants successfully won the rights to run this restaurant within the impressively refurbished gothic former station building in Richmond Yorkshire. As the centrepiece of the refurbished station (featured in The BBC's Restoration series) it was important to make the most of the height and dramatic original features of the building.

If you would like more information about our design services, please contact:

Cubit3d Design

Stuart House | Eskmills | Musselburgh | EH21 7PB

| T: 0131 273 5200 | E: russell@cubit3d.com

www.cubit3d.com